



Digital Slideshow Card

CARD DESCRIPTION

Enchant your friends and family with the Digital Slideshow Card. This high-tech holiday greeting allows you to send anyone a slideshow of your favorite photos in a festive card that they can display at home or work. Just add your photos!

NOTE: *Before you begin, make sure your card is fully charged.
(See Section 2 for instructions on charging your card.)*

DIGITAL SLIDESHOW CARD INCLUDES:

- Rechargeable Digital Slideshow Card
- Pre-installed Photo Compression Software
- Built-In USB Connection
- Protective Designer Envelope

SYSTEM REQUIREMENTS:

- Windows 2000, Windows XP, Windows Vista, Windows 7 or Mac OS 10.5 and above
- Intel® Pentium® processor, AMD Athlon™ processor 1.3 GHz and above
- USB port on computer for card connection

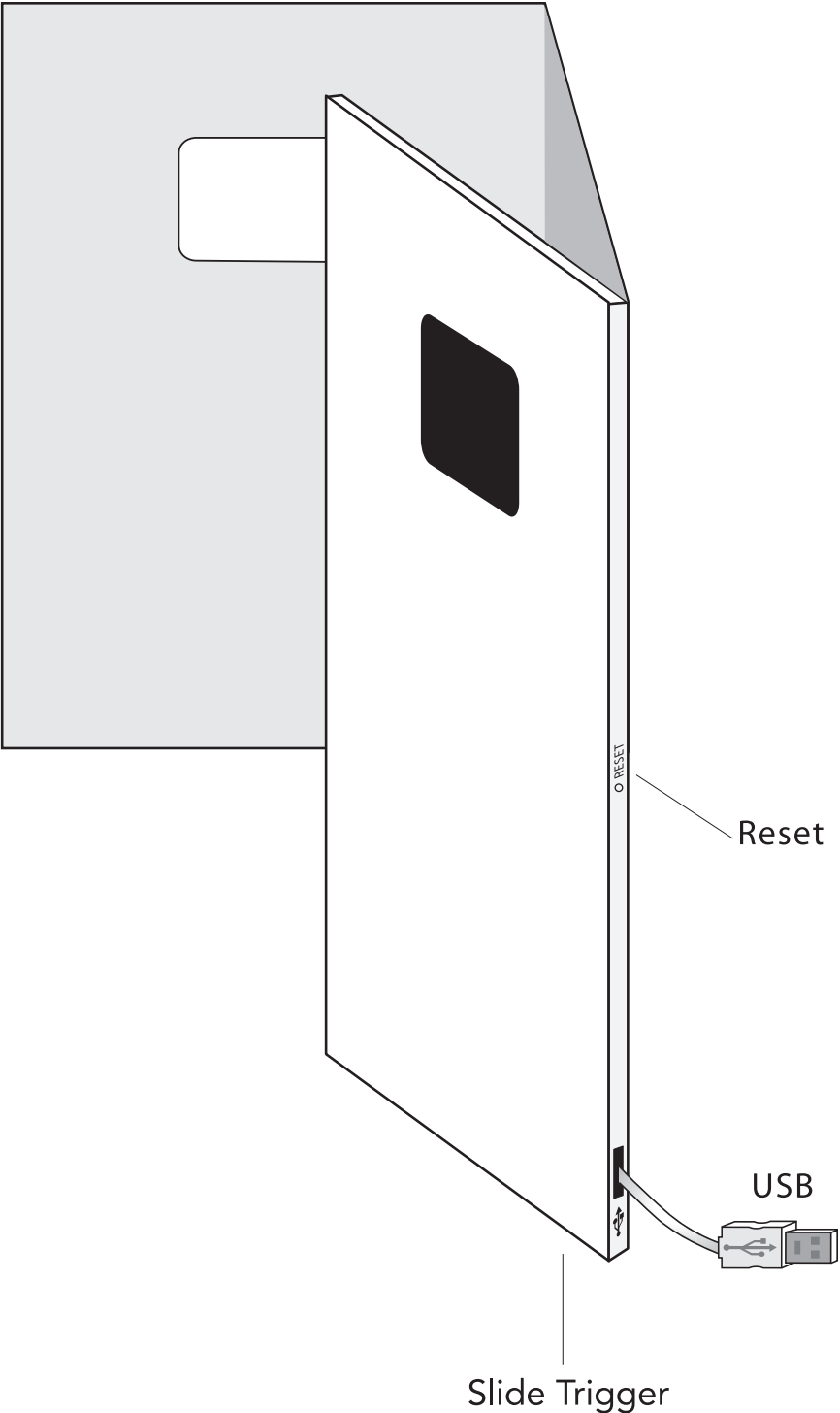
TECHNICAL SPECIFICATIONS:

- LCD Screen: 1.8"
- Resolution: 160 x 128 TFT
- Supported File Formats: JPG, JPEG, BMP, TIFF, TIF, GIF, PNG
- Capacity: 32 MB Internal Memory
- USB Port
- Power: 5V DC
- Battery Life: up to 1.5 hours
- Charge Time: 2 hours

TABLE OF CONTENTS:

1. Card Features
2. Charging Your Card
3. Adding Your Photos to Your Card
4. Deleting Your Photos from Your Card
5. Resetting Your Card
6. Troubleshooting

1. CARD FEATURES

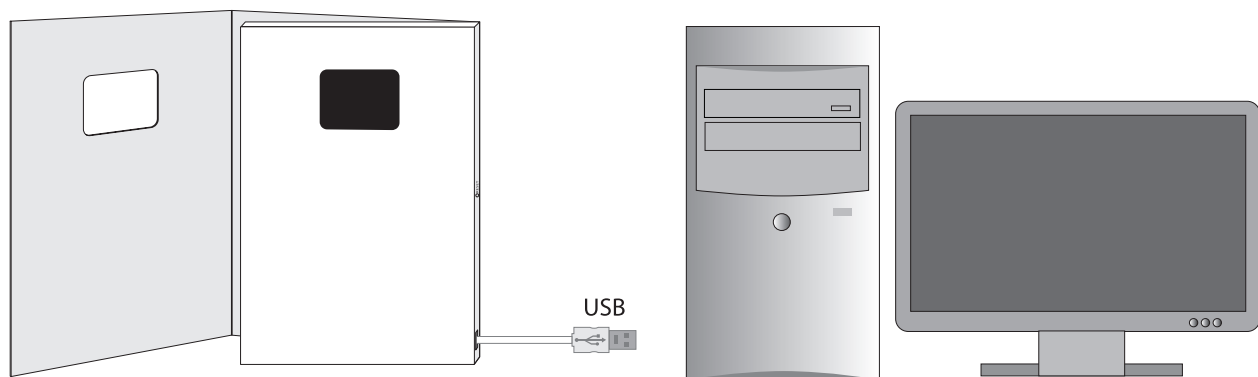


2. CHARGING YOUR CARD

Before you'll be able to prepare and send your card, you'll need to charge it. This will take about 2 hours. To charge, you'll need your card and the USB port on your computer.

Follow these steps to charge your card:

1. Turn on your computer.
2. Locate the built-in USB at the bottom right corner of your card.
3. Use slide trigger to expose USB and pull gently to extend 1" cord.
4. Connect USB to USB port on your computer.
5. A battery icon appears in top right corner of card screen as it charges (allow 2 hours to fully charge)
6. Disconnect USB from computer and gently push back into card.



While the card is charging, you'll see a battery symbol appear in the upper right corner of the screen. Your card will be charged in 2 hours; there will be no other indication when your card is fully charged.

If your card does not turn on when you open it, the battery may be completely drained. Make sure to charge it for the full two hours.

3. ADDING YOUR PHOTOS TO YOUR CARD

In order to add photos to your card, make sure it's connected to your computer. To connect it, locate the built-in USB at the bottom right corner of your card. Use the slide trigger to expose USB and pull gently to extend 1" cord. Connect USB to USB port on your computer. Then open the card.

Your computer should detect the card once it's connected; it may give you a message telling you it has found new hardware.

Depending on your computer settings, the card software may open automatically, or your computer may ask you for permission before opening the card software. If neither of these things happens, you will have to run the card software yourself.

If you have trouble opening or running the software, please call Photoworks at 1-800-746-8696. We'll be happy to help.

To manually run the software using a Windows computer open "My Computer" and click on PW Card. If you're using a Macintosh, open the PW Card available on your desktop.

Adding Photos in Windows:

In the Photos on Computer window, find the photos you want to import. The photos in the selected folder will appear in the window marked Photos on Computer.

Select a photo and click the rotate button to rotate any of these photos **before** you add them to your card.

To add a photo to your card, click on the photo and press the Add to Card button.

To change the order of your photos within the slideshow, adjust the order in the Photos on Card window by drag and dropping the photos in the desired order.

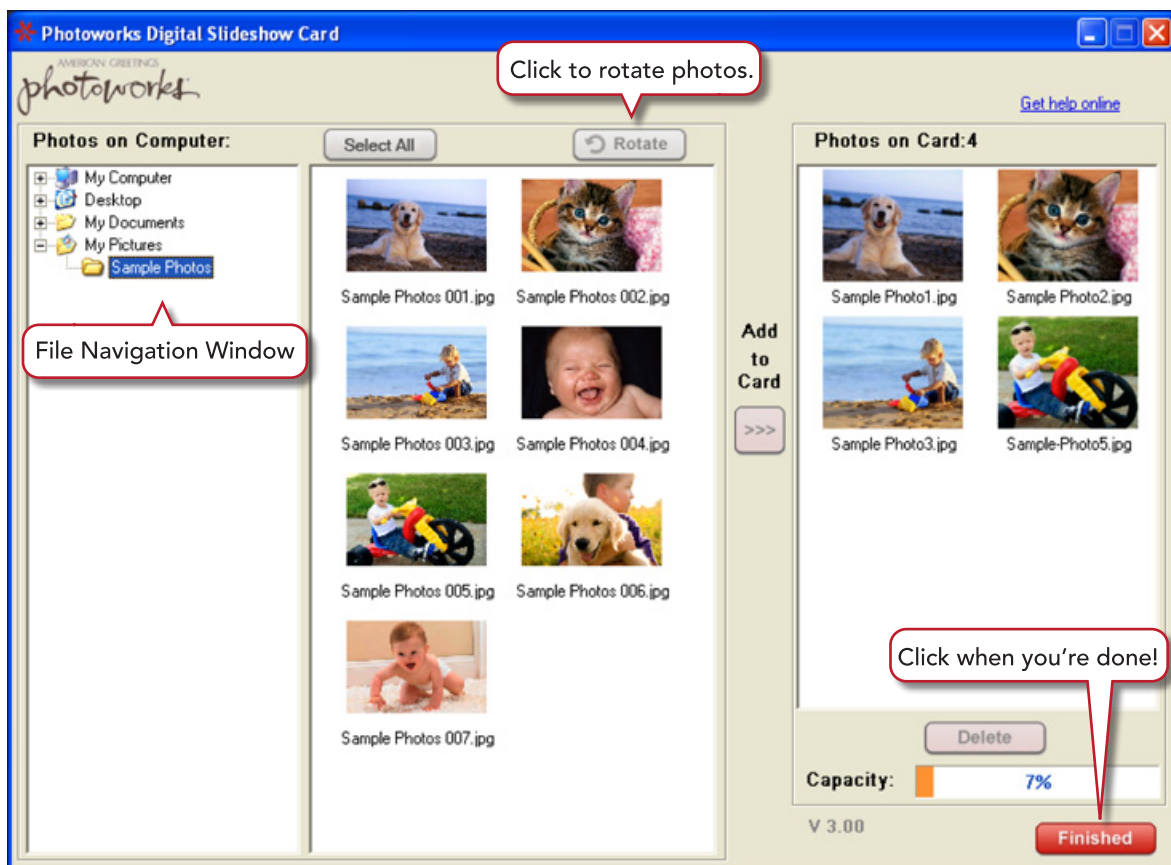


Figure 1. Windows Software

Once you have loaded your photos on the card, click the Finish button and close the software on your computer. You can now disconnect the USB cord from the computer.

Adding Photos in Macintosh:

In the primary window, select Import Photos. Browse in the resulting window to find the pictures you want, select them and click Choose. The photos in the selected folder will appear in the window marked Photos on Computer.

Helpful Hint: It is best to create a folder and copy the photos you have selected for your slideshow. Use the Import All feature to load photos from this folder as one large import.

Select a photo and click the rotate button to rotate any of these photos **before** you add them to your card.

To add a photo to your card, click on the photo and press the Add to Card button.

Be sure not to interrupt the software while image is loading. Wait for the function buttons to return to normal (black font reappears) before attempting to load additional images or closing the software.

To change the order of your photos within the slideshow, adjust the order in the Photos on Card window by drag and dropping the photos in the desired order.

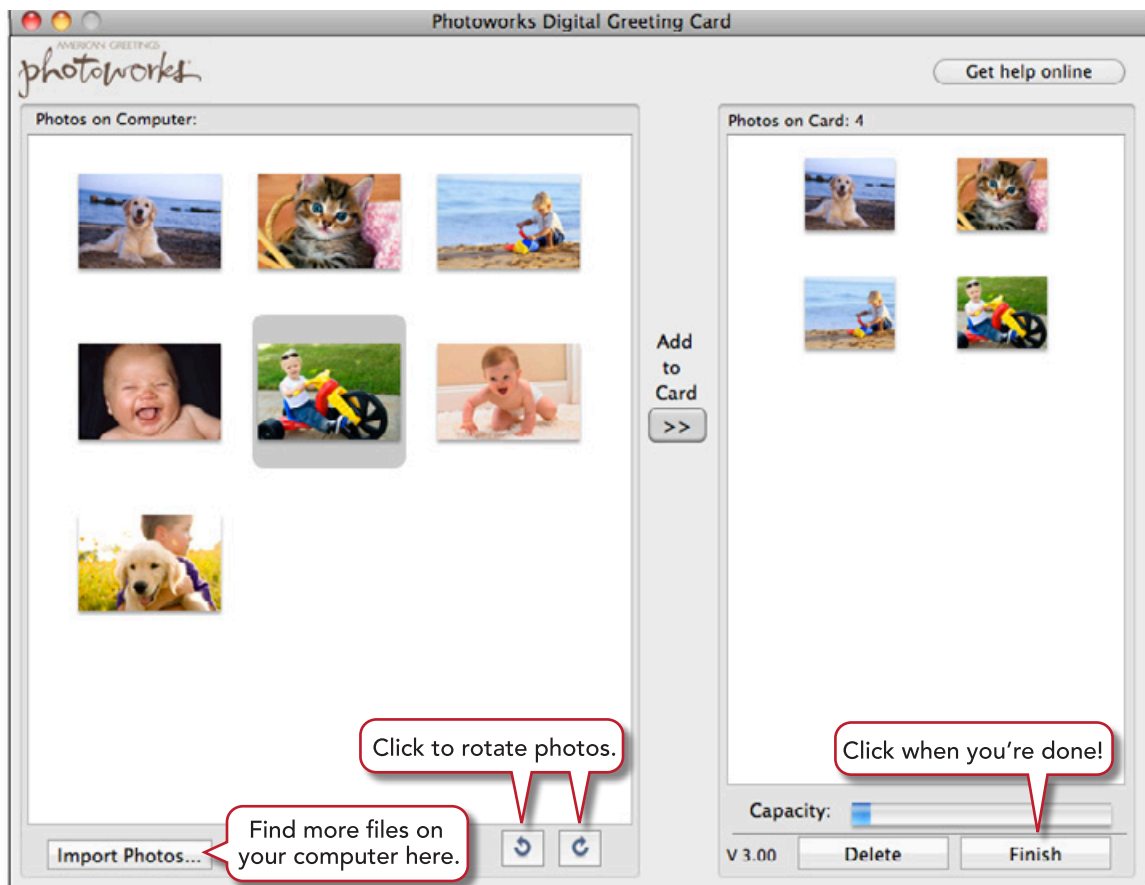


Figure 2. Macintosh software

Once you have loaded your photos on the card, click the Finish button and close the software on your computer. You can now disconnect the USB cord from the computer.

4. DELETING PHOTOS FROM YOUR CARD

Make sure your card is plugged into the computer. Once the card software is open, select any photos you want to delete from the Photos on Card window, and press the DELETE button. (Photos saved on your computer will not be affected.)

5. RESETTING YOUR CARD

If your card freezes or is not functioning properly you may need to reset your card. You can reset your card using the Reset Button. This small recessed button can be found on the side of the card. You can use a paper clip or a pen to press the Reset button.

When you reset the card, your images will remain on the card.

6. TROUBLESHOOTING

Symptom	Corrective Action
Card does not turn on/No power	Charge device by plugging it into your computer via USB port
Card will not display pictures	Make sure images are in these formats: JPG, JPEG, BMP, TIFF, TIF, GIF, PNG
	Make sure you're using one of these operating systems: Windows 2000, XP, Vista, Windows 7 or Mac OS 10.5 and above
Card displays partial images	Connect card to computer and launch software. Delete partial images from card. Reload each image. Be sure not to interrupt the software while image is loading. Wait for the function buttons to return to normal (black font reappears) before attempting to load additional images or closing the software.
Card Freezes	Locate and gently press the reset button.
"No photos on card" message	Load photos onto the card.
"No File" message	Load photos onto the card.

FCC ST 2302U

This device complies with part 15 of the FCC rules. Operation is subject to the following two conditions (1) this device may not cause harmful interference and (2) this device must accept any interference received, including interference that may cause undesired operation.

For additional FCC information see www.ag.com/notices

updated - November, 2010